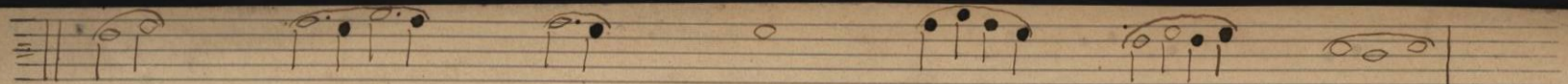
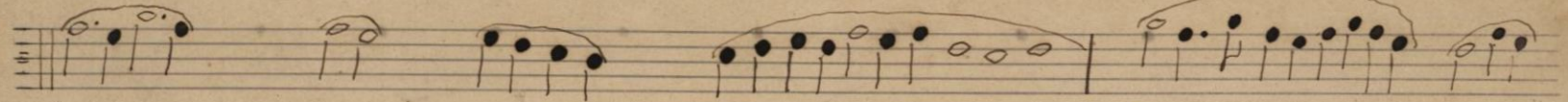


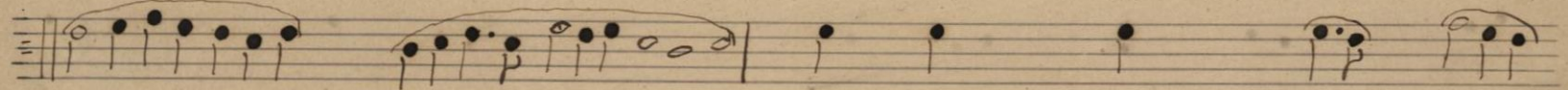
№1.



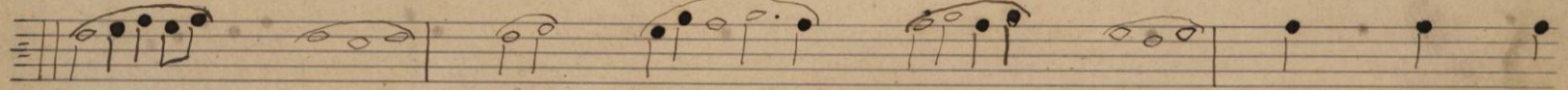
რა... ბე... ლა... ბე... რა... ბიბ... თა...



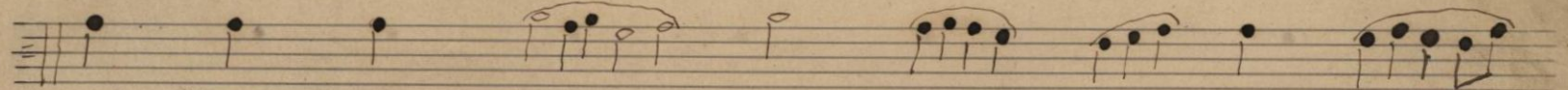
სა... ა... ჟუბ... ლორ... ჰუბ... სვავ...



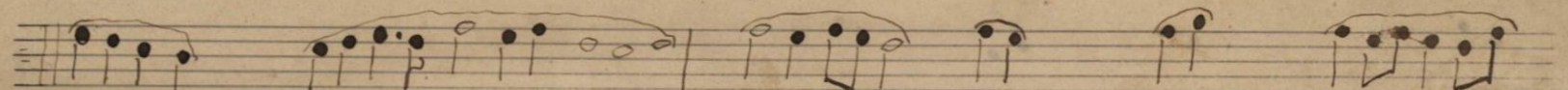
სე... ნათ... და... ცხათ... ველს... მყო... ბე...



ლა... სა... სა... ბე... ბი... სა... სამ... რბი... და...

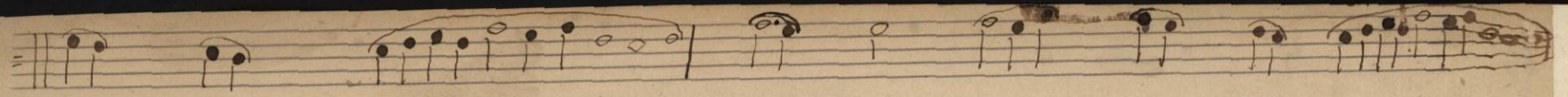


ანი... სთ... ბი... სა... ვა... ლორ... ბა... სა... ჰე...

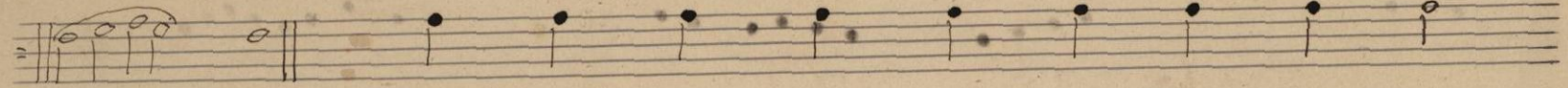


სწი... რბივთ... ყო... ბე... ლა... ბე...

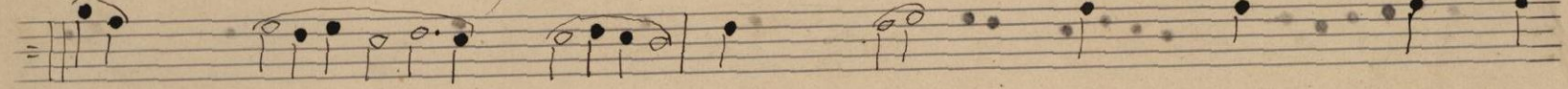
საქმედი რეპეტიციონი



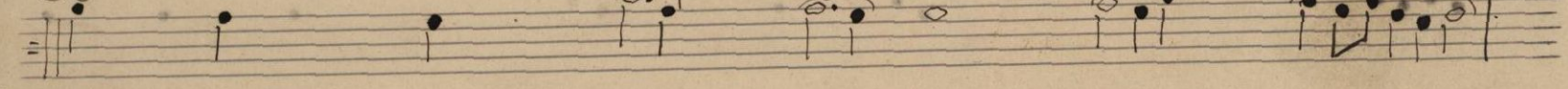
მხრ- ელა- რ- ღა- უ- ღე- უთი- შნუ- ნვა.



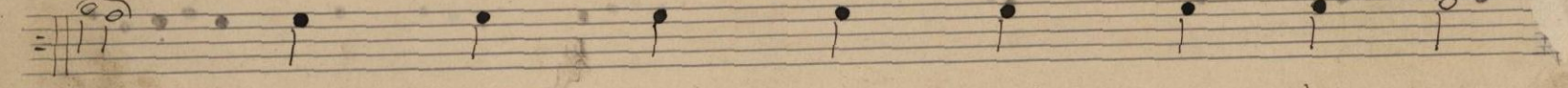
ა- მინ- ღა- უ- თან- ცა- ძე- უ- უი- სა- ყო-



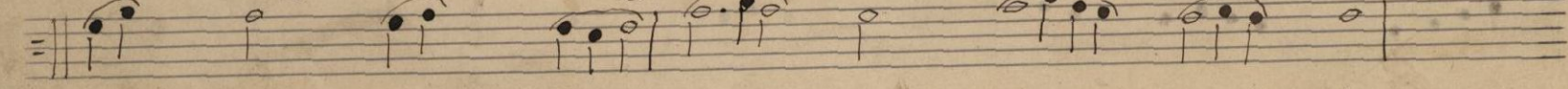
ეულ- თა- სა- შებ- წყნა- ზე- ბულ- თა- ან-



ვე- ლობ- თა- ებნ- უ- სი- ლა- უად-

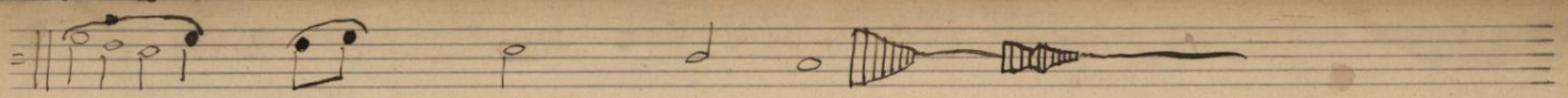


ძვენი- შებ- წინ- ელ- თა- წეს- თა- სა- ალ-



ლო- ლუ- ი- ა- დლ- ლი- ლუ- ი- ა-

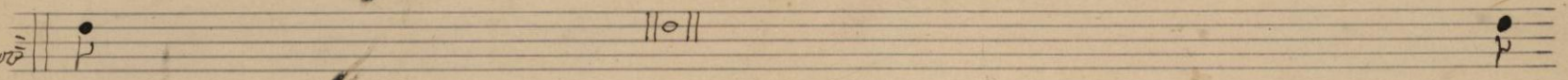
Handwritten text in the left margin, possibly a page number or reference.



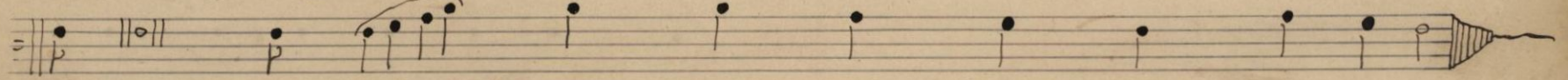
23.

აღ --- ღი --- ლუ --- ი --- ა.

რეკორდატი
№3.

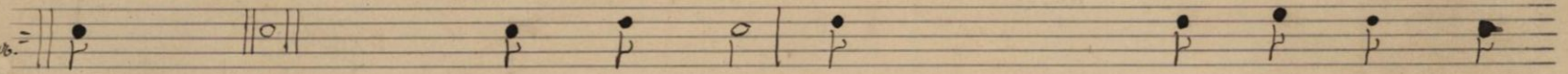


აკურთხევს --- სული --- ჩემი --- უფლისა --- და --- ყოველი --- გონება --- ჩემი --- სახელსა ---

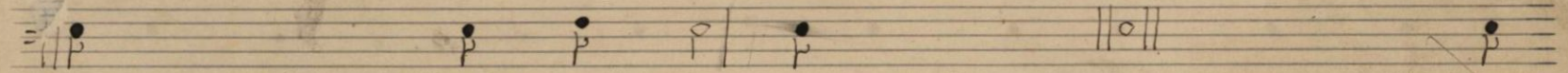


წმიდასა --- მის --- სა --- კურ --- თუ --- ულ --- ხარ --- შენ --- უ --- ფა --- ლს.

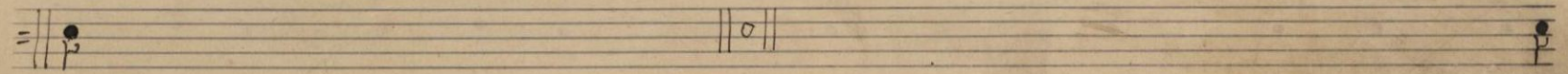
რეკორდატი
№4.



დიდება... აქ... უკუნისამდე --- ა --- მინ. მხოლოდ --- შობილი --- ძე --- და --- სი --- ჭყვა

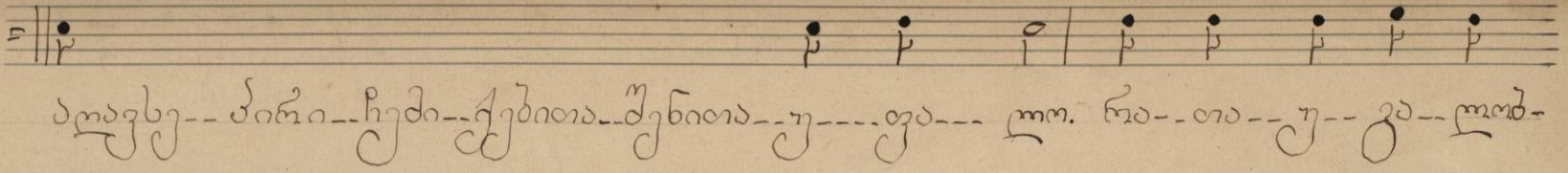


ღვთისა --- უკვდავი --- არ --- სე --- ბა --- თვეს --- იღვა --- ჩვენისა --- ცხოვრებისათვის,

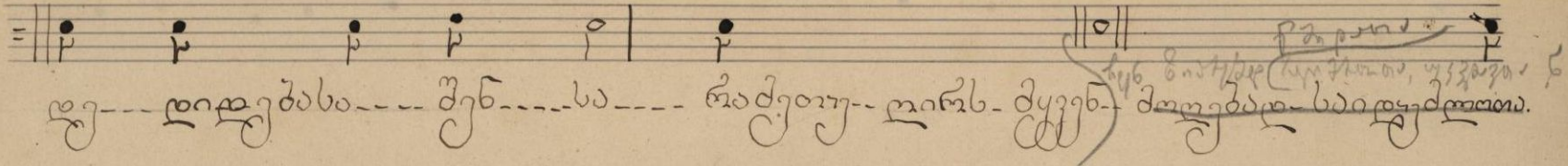


ხარცნი --- შეისხნა --- სულისაგან --- წმიდისა --- და --- მარიაძისაგან --- ქალწულისა

A6+

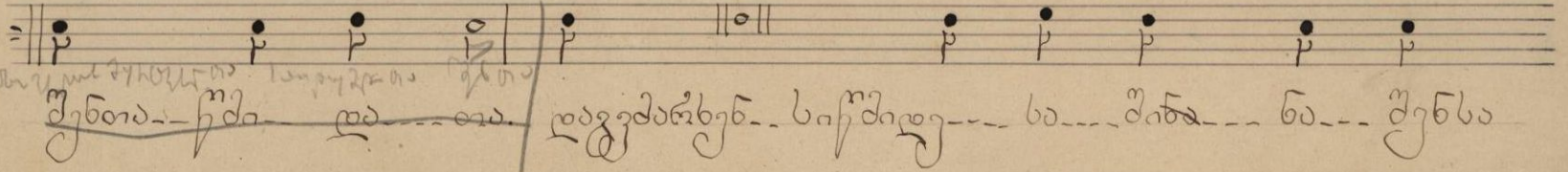


ატავსე-- პირი-- ჩუმი-- ქებია-- შენია-- უ-- ფა-- ლო. რა-- თა-- უ-- ვა-- ლოდ--

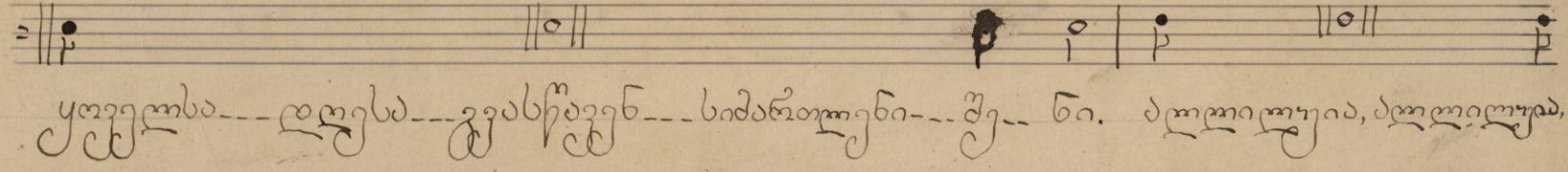


ღე-- ღიღებსა-- შენ-- სა-- რაძეოუ-- ღირს-- ძყვენ-- მოღებდ-- სიღყძლოთა.

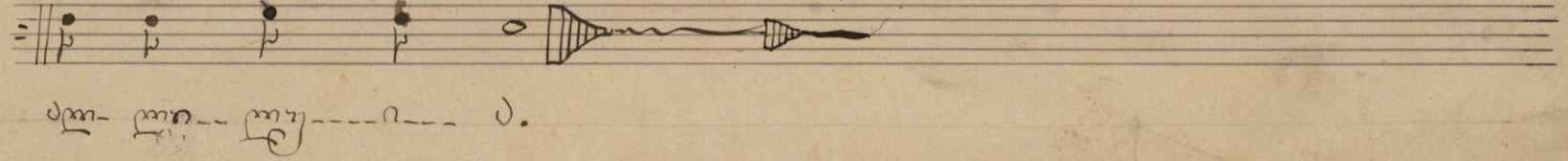
Handwritten notes: რაძეოუ...
Handwritten notes: შენ...
Handwritten notes: მოღებდ...



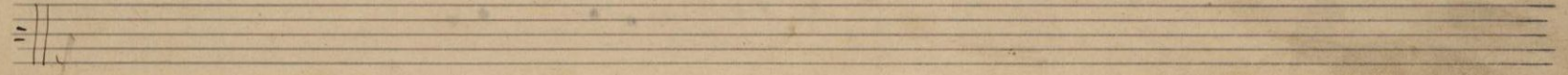
შენია-- ჩუმი-- ღა-- თა-- ღაგუძარხენ-- სიწმიდე-- სა-- შინა-- ნა-- შენსა



ყოველსა-- ღღესა-- ვასწავენ-- სიძაროუენი-- შე-- ნი. ძლოთოლუად, ძლოთოლუად,



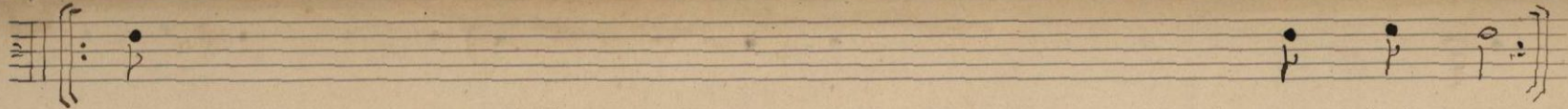
ძო-- ლო-- ლო-- ი-- ა.



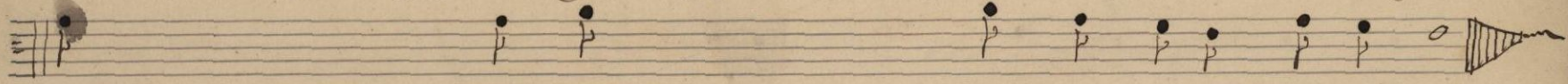
ატავსე
 პირი
 ჩუმი
 ქებია
 შენია
 უ
 ფა
 ლო

6.

№7.



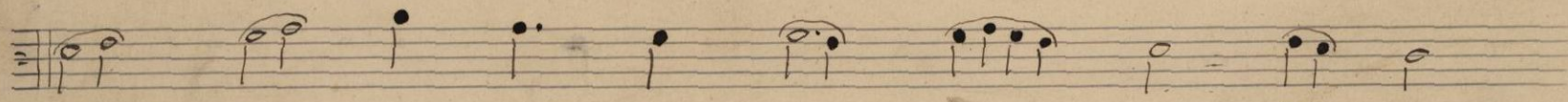
ყავნ-სახელი-უფლისა-კურთხეულ-ამერიდვან-და-უუნიხაქსამ-დე-



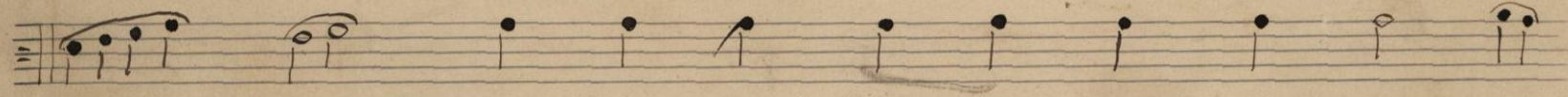
ყავნ-სახელი-უფლისა-კურთხეულ-ამერიდვან-და-უ-უ-ნი-ხამ-დე.

№8.

Мелодия: храмовая старая. (Брассе)



ფშვის-დე-ყა-ნა-ქარ-თლი-სა-ხუნ-ხე-დე-



ბი-თა-ვა-ბო-თარ-გმა-ხე-ბი-თა-ქ-ნილ-



თა-შენ-თა-თა-და-უ-მე-ცხე-ბი-სა-კვალ-

Handwritten musical notation on a five-line staff. It begins with a treble clef and a key signature of one sharp (F#). The notes are: G4 (quarter), A4 (quarter), B4 (quarter), C5 (quarter), D5 (quarter), E5 (quarter), F#5 (quarter), G5 (quarter), A5 (quarter), B5 (quarter), C6 (quarter).

გი...თა...ვან...ხმე...ლი...ე...ნი...ქს...ველ...

Handwritten musical notation on a five-line staff. It begins with a treble clef and a key signature of one sharp (F#). The notes are: G4 (quarter), A4 (quarter), B4 (quarter), C5 (quarter), D5 (quarter), E5 (quarter), F#5 (quarter), G5 (quarter), A5 (quarter), B5 (quarter), C6 (quarter).

თა...სწვე...ლა...თა...ქენ...თა...წვი...ძი...სა...

Handwritten musical notation on a five-line staff. It begins with a treble clef and a key signature of one sharp (F#). The notes are: G4 (quarter), A4 (quarter), B4 (quarter), C5 (quarter), D5 (quarter), E5 (quarter), F#5 (quarter), G5 (quarter), A5 (quarter), B5 (quarter), C6 (quarter).

სი...ხმო...თა...მწყურ...ნებ...ნი...ქენ...ლა...ვე...

Handwritten musical notation on a five-line staff. It begins with a treble clef and a key signature of one sharp (F#). The notes are: G4 (quarter), A4 (quarter), B4 (quarter), C5 (quarter), D5 (quarter), E5 (quarter), F#5 (quarter), G5 (quarter), A5 (quarter), B5 (quarter), C6 (quarter).

ძა...ველ...ტით...ი...თხა...ვე...ქვი...სა...ვან...მშვი...

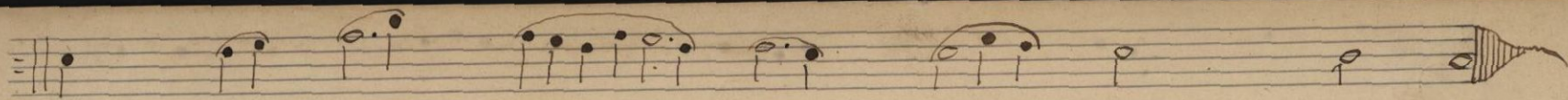
Handwritten musical notation on a five-line staff. It begins with a treble clef and a key signature of one sharp (F#). The notes are: G4 (quarter), A4 (quarter), B4 (quarter), C5 (quarter), D5 (quarter), E5 (quarter), F#5 (quarter), G5 (quarter), A5 (quarter), B5 (quarter), C6 (quarter).

ლა...სა...ძირ...წმუ...ნი...სა...ავის...ქე...ფი...სა...

Handwritten musical notation on a five-line staff. It begins with a treble clef and a key signature of one sharp (F#). The notes are: G4 (quarter), A4 (quarter), B4 (quarter), C5 (quarter), D5 (quarter), E5 (quarter), F#5 (quarter), G5 (quarter), A5 (quarter), B5 (quarter), C6 (quarter).

ჩვე...ნი...სა...ლა...ე...ნი...სა...ძი...სი...

8.



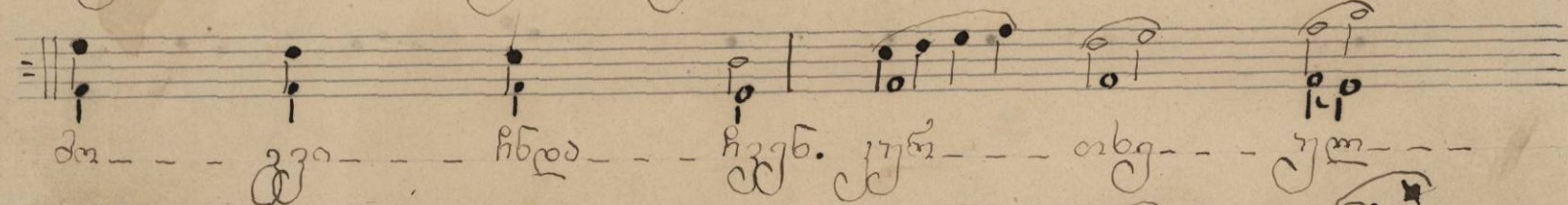
სა - - - - - ბბბა - - - - - უ - - - - - ლაა - - - - - სა - - - - - ვა - - - - - ძველ - - - - - თა - - - - - სა.

№9.

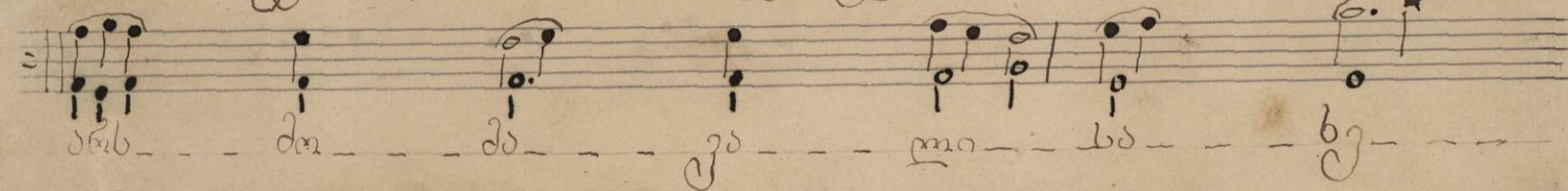
თორთოევი Iruacca.



აბა - - - - - თა - - - - - უ - - - - - ვა - - - - - ლა - - - - - რა - - - - - ვა - - - - -



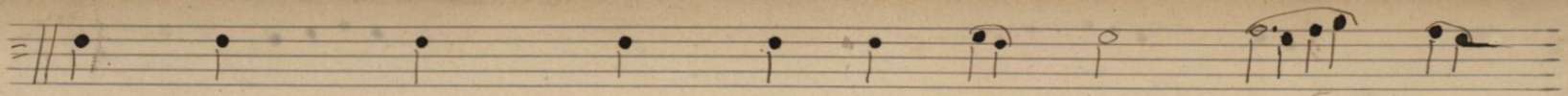
და - - - - - ვა - - - - - ხბდა - - - - - ხვბ. ურ - - - - - თბგ - - - - - ურ - - - - -



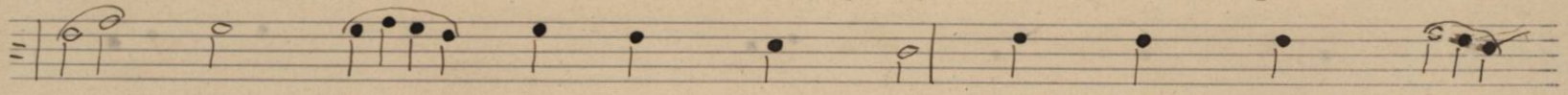
და - - - - - და - - - - - და - - - - - ვა - - - - - ლა - - - - - სა - - - - - ბ - - - - -



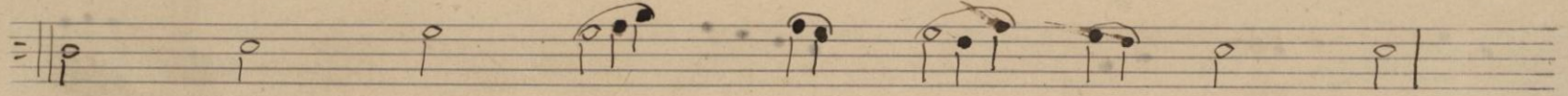
ლა - - - - - თა - - - - - უ - - - - - ვა - - - - - სა - - - - - თა.



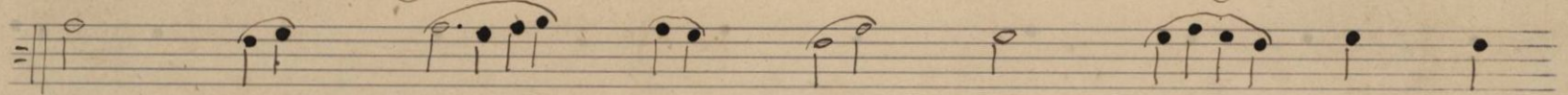
მა --- უძს --- ლა --- რა --- ი --- გი --- რა --- ბეჭ --- ღვეს --- ი ---



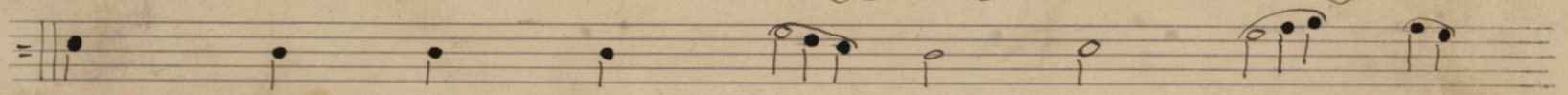
ელ --- უ --- რი --- ა --- თა --- მი --- ჟრ --- რა --- მხე --- რაზ --- ნი ---



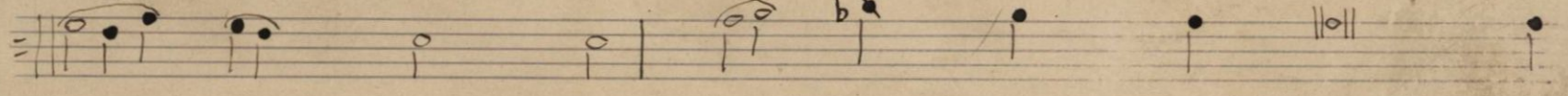
სვი --- ღვს --- უხ --- წვეს --- სა --- ხორც --- სა --- შენ --- სა ---



ხა --- ლა --- შენ --- ალა --- სფე --- მე --- სა --- მე --- სა ---

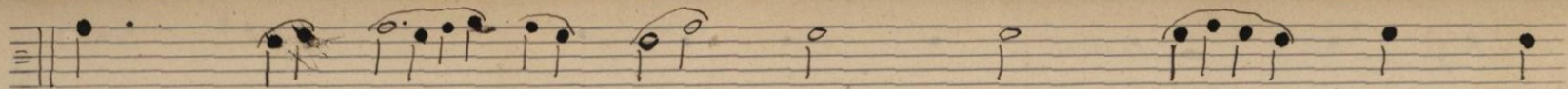


ღვე --- სა --- რა --- ძო --- ა --- ნი --- ჟე --- ხა --- ღვეს ---

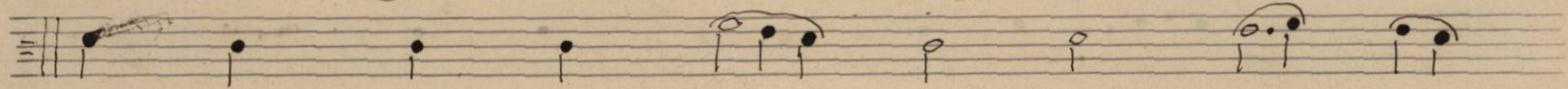


სა --- მშვი --- რაზ --- ბა --- ა --- მის --- თვას --- ეა --- ძაღნი --- გარანი ---

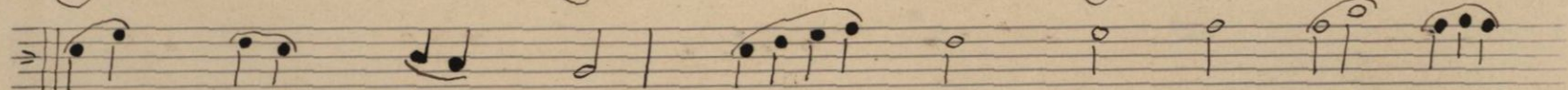
M. G. G. G.



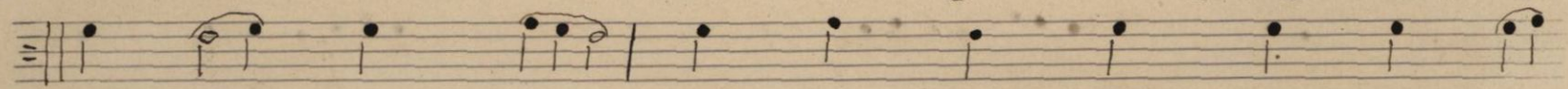
გილა --- ლა --- ლე --- ბენ --- შენ --- ცხო --- ჟე --- პის --- ძამ --- ჟე ---



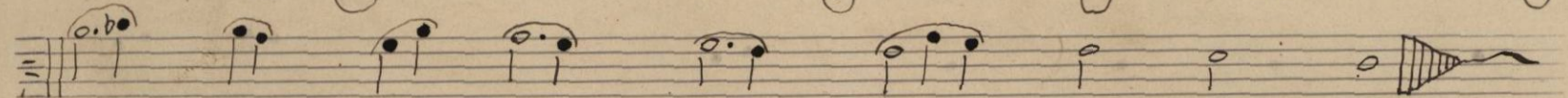
ქე --- ლო --- ლი --- ლე --- ბა --- ბა --- ლე --- ბა --- სა ---



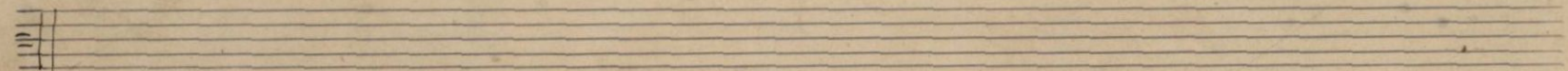
შენ --- სა --- ჟე --- სქე --- ლი --- ლე --- ბა --- ქე --- ჟე --- ლე ---

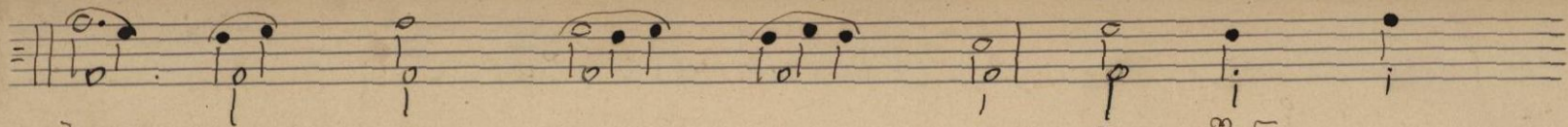


ბა --- სა --- შენ --- სა --- ლი --- ლე --- ბა --- ვან --- ლა --- ძო --- სლო ---



სა --- შენ --- სა --- მხო --- ლო --- კოკო --- ძო --- ყვ --- ჟე ---

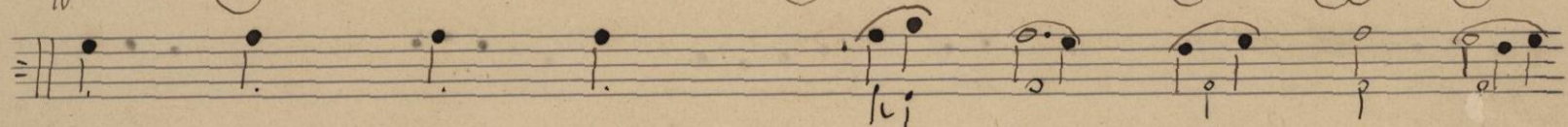




ბა-... ე-... მ-... ლა-... ვი-... მა-... შინ-... ჟო-...



ჟო-... ხე-... თი-... შვი-... აძნ-... ჟინ-... ე-... ჟო-...



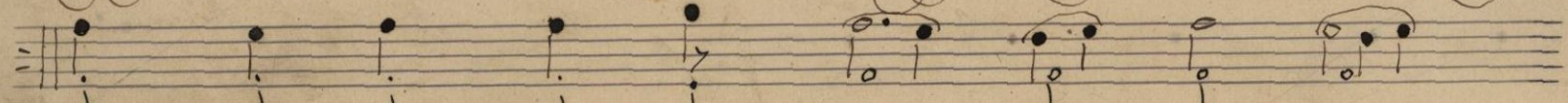
ჟი-... თა-... შირ-... ჟოთა-... ჟი-... ში-... ხა-... შვი-... ხი-...



ხა-... თა-... ხა-... ჟო-... ხა-... ჟაძნ-... ჟოთაძნ-... ხი-... ე-...



ხე-... ჟოთი-... აქ-... ში-... ი-... ყა-... ხე-... მა-... შინ-... ჟო-...

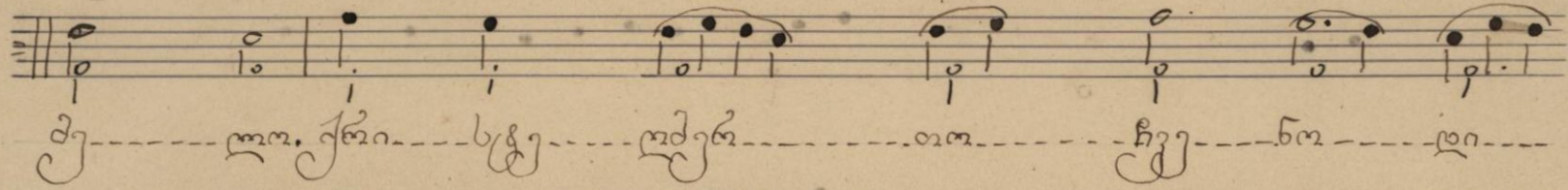


ე-... ხი-... ძა-... ხი-... ჟა-... თა-... ხი-... ჟა-... ჟა-...

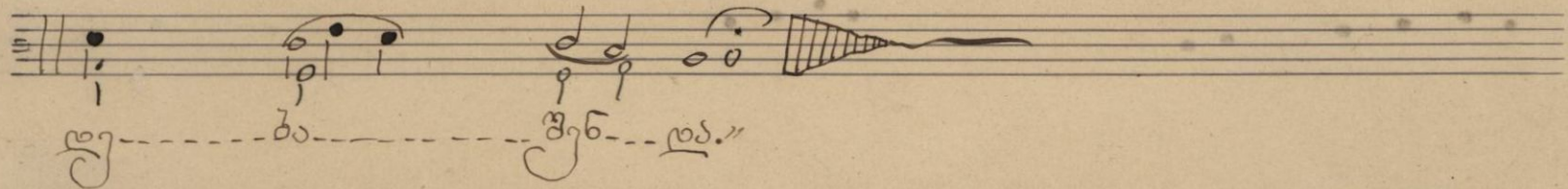
bug
A



ღებ --- ღენ: „ცხოვ --- ზე --- პის --- ძოდ --- ყე ---

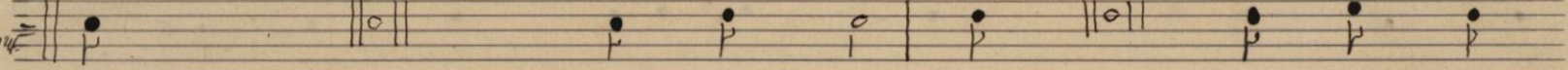


მე --- ლო. ქნი --- სცე --- ლდენ --- თო --- ზვე --- ნო --- ღი ---



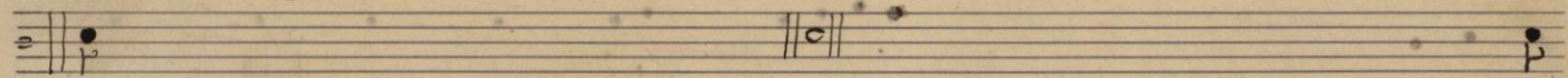
ლე --- ბა --- შენ --- ღა. ---

სიღვ. ცხარით

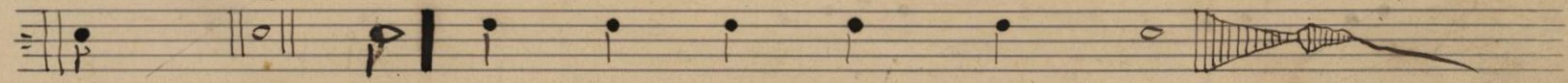


All.

ნათელა --- ჭეშმარიტი --- ეი --- სი --- ლეო. ზეკათა --- სული --- ძო --- ეი ---



ლეო --- ებოვეო --- სანქქონობა --- ჭეშმარიტი --- ღა --- დანყოფელსა --- სადებასა ---



დაყვანის --- ესკეთო --- ზა --- თა --- ევა --- ეხა --- ენს --- ჩვენ.

14. Ի իմ Իսրայել III ապագա.

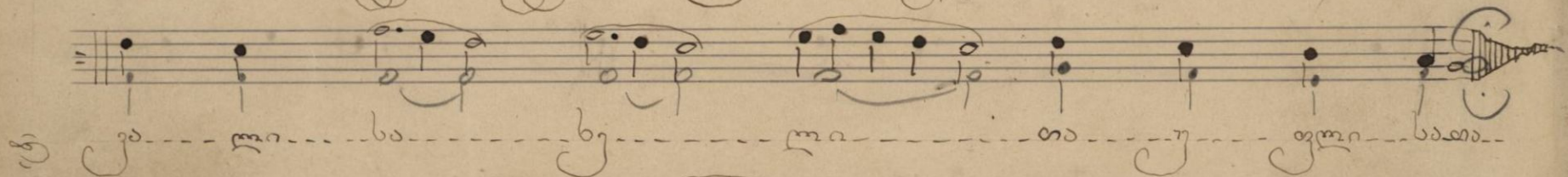
№ 12. մի քաղ թե



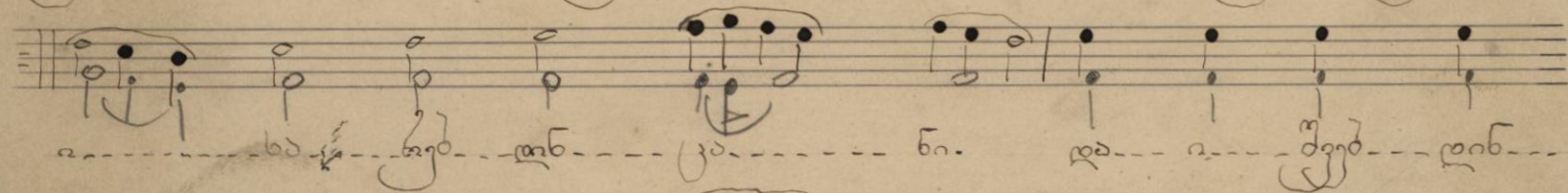
Երբ որ արեւը լուսնի հետ միասին կարգաւորուի



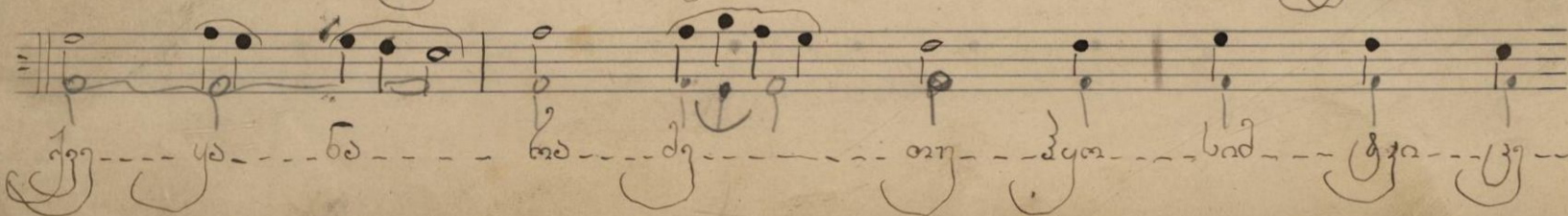
Ինչպէս որ երբեք չեն կարող հասնել մեզ



Եւ ինչպէս որ երբեք չեն կարող հասնել մեզ



Եւ ինչպէս որ երբեք չեն կարող հասնել մեզ



Եւ ինչպէս որ երբեք չեն կարող հասնել մեզ

Մ. Կոմիտաս

ქოდა - გო - თა - თუი - სი - თა - უ - თუდა მან.

დასიზღუუნდა - სიუღლითა - სიუღლითა - ღი - ღი - და - შინა -

მშო - უ - ქმნა - უ - სუ - უ - უ - უ - თა.

მიკლიხედა - ჟოჯო - სე - თი - სა - ში - სსნა - ივი.

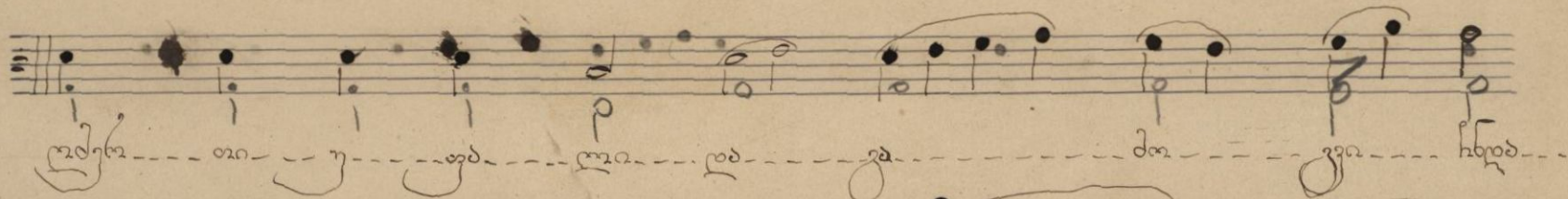
და - ში - დ - ნი - ჯა - სი - თუი - სა - ღი - ღი -

გა - ღი - # - შა -

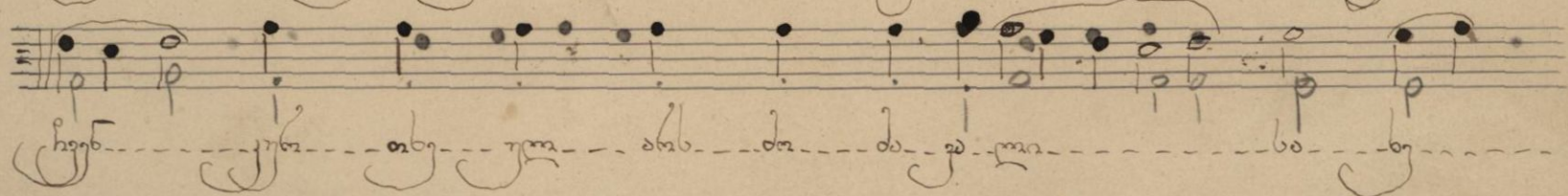
11

გაბრიელი იოანე VI სტა. 4. 8

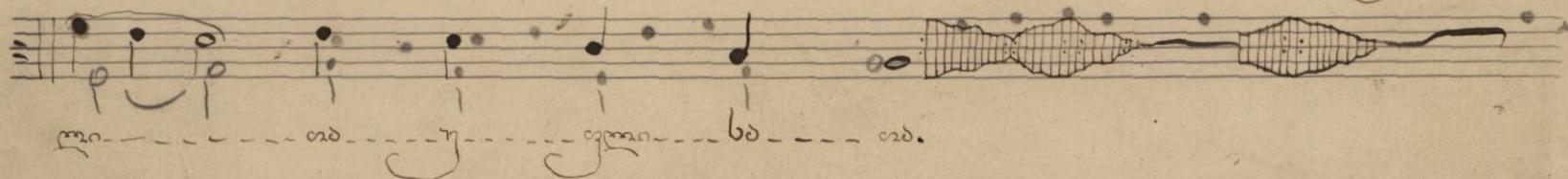
№13.



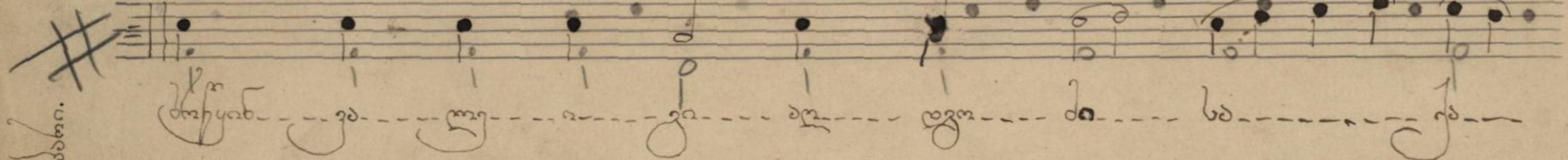
გაბრიელი იოანე



ჯანსაღი და მკურნალი



ღმერთი და მამა



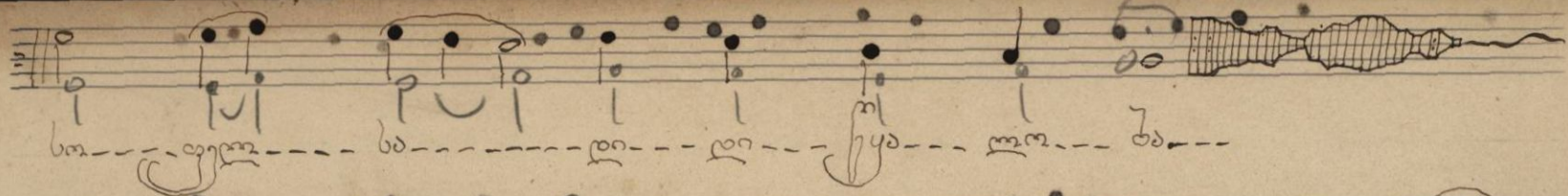
მამა და მამა



მამა და მამა

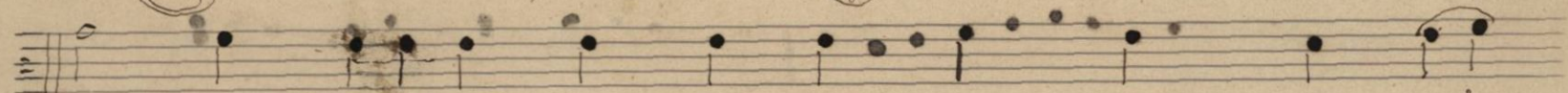
გაბრიელი

18.



ხა... უკლ... ხა... რი... რი... უკლ... რი... ხა...

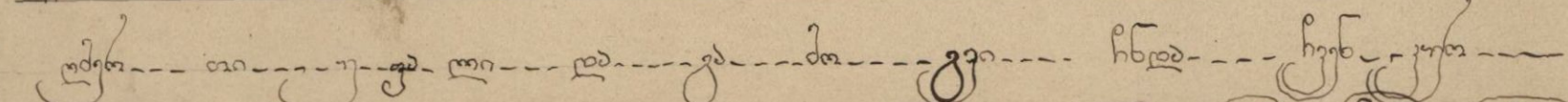
№14.



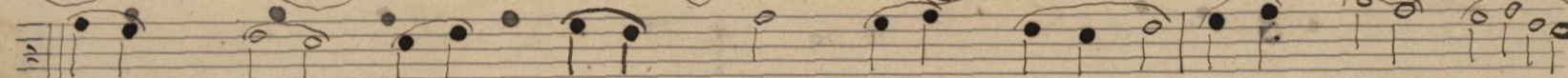
უბრ... თა... უ... უ... რი... რა... უ... დო... უ... ხნ... ხრ... უ...

ბბბ.ბ.

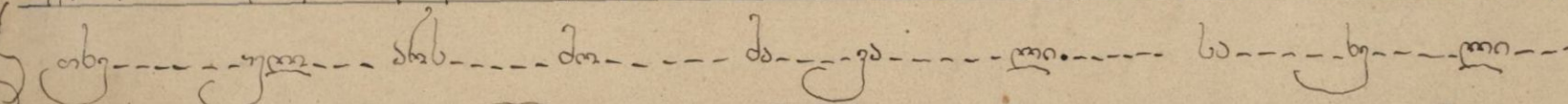
ღმერთი უფალი



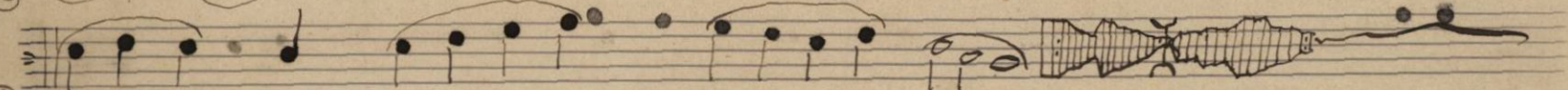
თბ... უკლ... უბ... დო... და... უ... რი... ხა... ხ... რი...



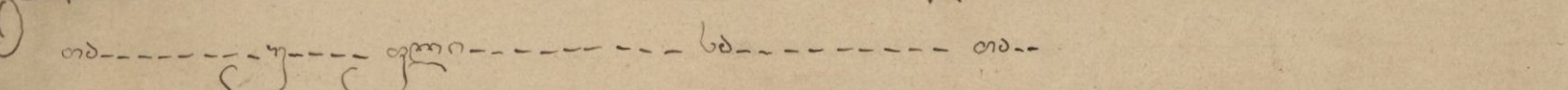
თბ... უკლ... უბ... დო... და... უ... რი... ხა... ხ... რი...



თბ... უკლ... უბ... დო... და... უ... რი... ხა... ხ... რი...

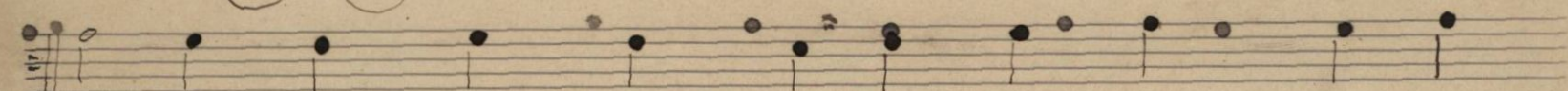


თბ... უკლ... უბ... დო... და... უ... რი... ხა... ხ... რი...

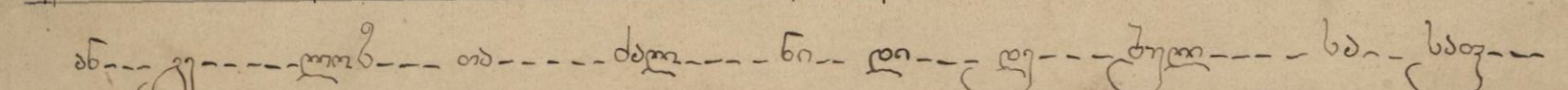


თბ... უკლ... უბ... დო... და... უ... რი... ხა... ხ... რი...

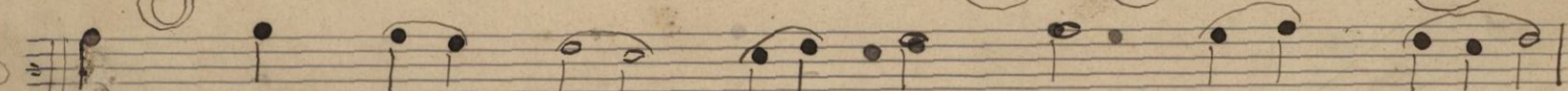
ღმერთი.



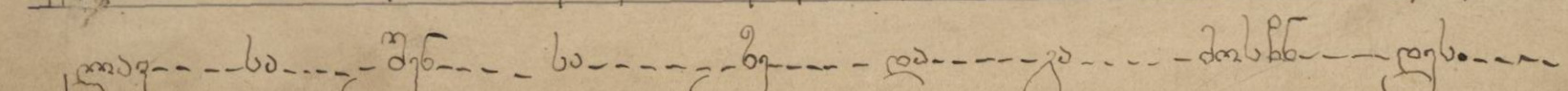
უბ... უ... რი... თბ... დო... ნი... რი... უ... უ... ხა... ხა...



უბ... უ... რი... თბ... დო... ნი... რი... უ... უ... ხა... ხა...



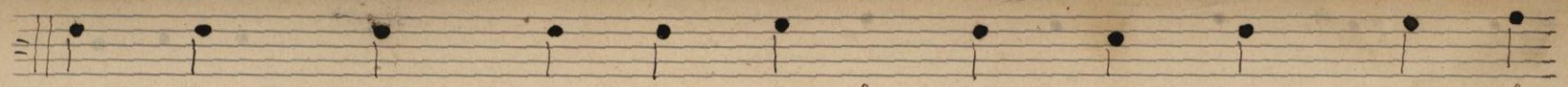
უბ... უ... რი... თბ... დო... ნი... რი... უ... უ... ხა... ხა...



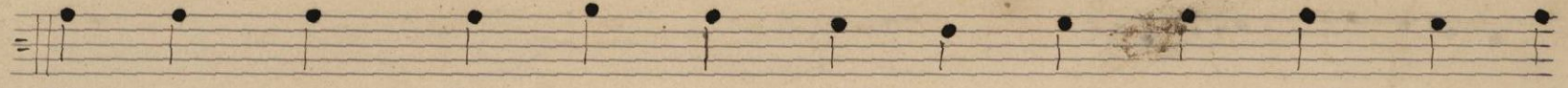
უბ... უ... რი... თბ... დო... ნი... რი... უ... უ... ხა... ხა...



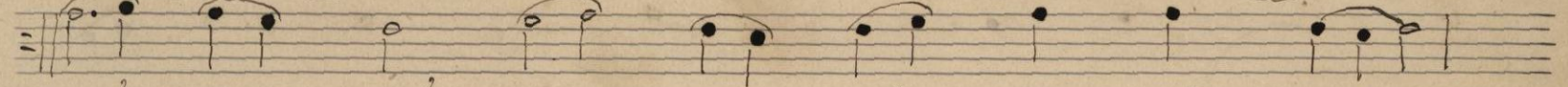
უბ... უ... რი... თბ... დო... ნი... რი... უ... უ... ხა... ხა...



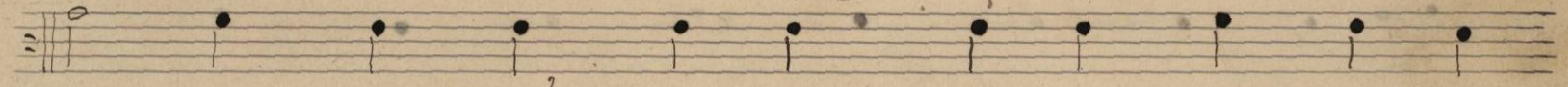
და - მუჟუ - რნი - ო - გი - მუჟადნი - ოქ - მისს - სოფა - ძე - ხი -



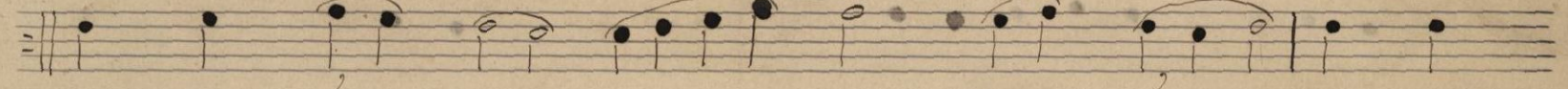
მ - სადო - რადე - ხა - ძის - თა - ხა - და - გ - ძი - გი - და - მუ -



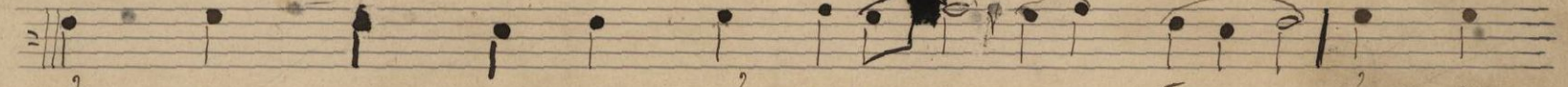
მუჟნი - ვადე - რნი - მუჟადნი - ხა - ვადე - ხა - მუჟ - ხა -



ხა - და - მუჟ - მუჟნი - ძი - სეჟე - გე - ჟა - ჟა - ხე - თი -

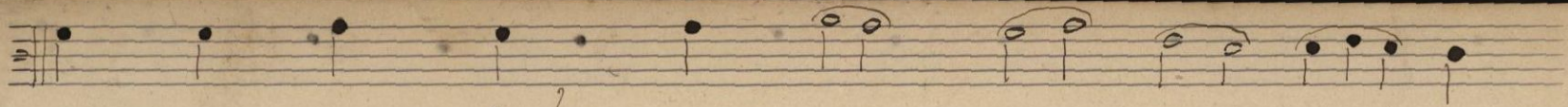


და - ო - ხა - ვე - რნი - ძის - ძი - მუ - ო - ხა -

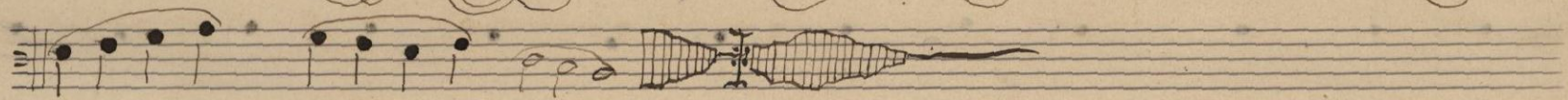


ხე - მუჟადნი - მუჟადნი - ხა - ცხა - ვე - მუჟადნი - ხა - ხა - მუ -

20.

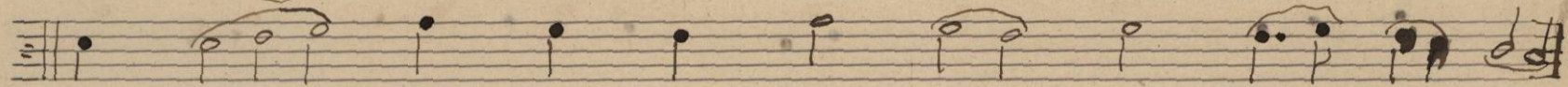


ლო... და... სრფ... ქვედა... თრ... უ... უბ... ლო... ლი... ჭე...

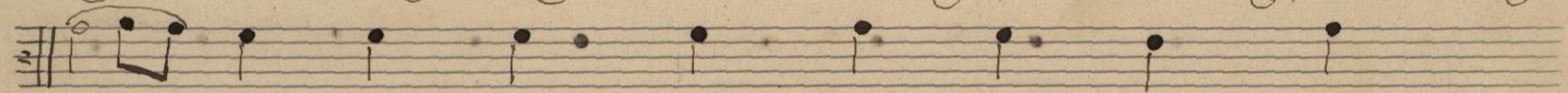


ბა... უ... და.

№15.



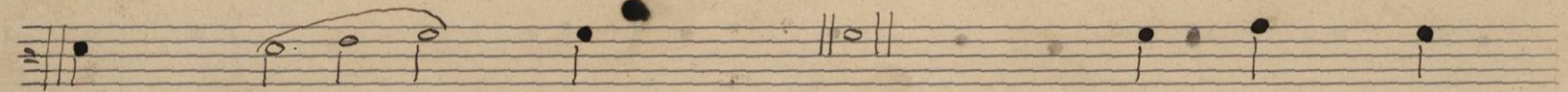
ქვე... თი... უ... უბ... ლო... და... უბ... შო... უფი... ჩნდა... ხუნი...



ქუნი... თხე... ულ... ანს... შო... შა... უგა... ლი... სა...

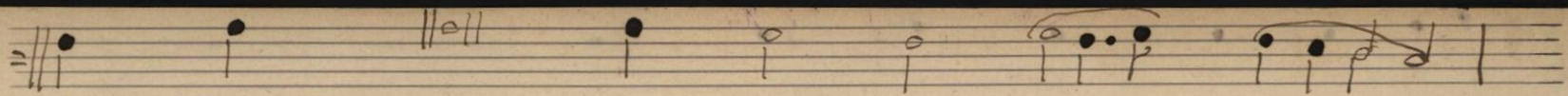


ბე... ლი... თა... უ... ულო... სა... თა.

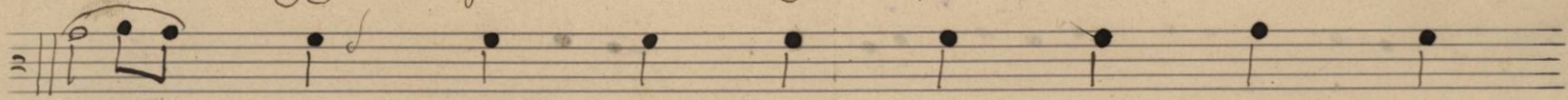


თა... ნა... და... უსაბაბისა... მას... სი... ხუცი... შა... ში...

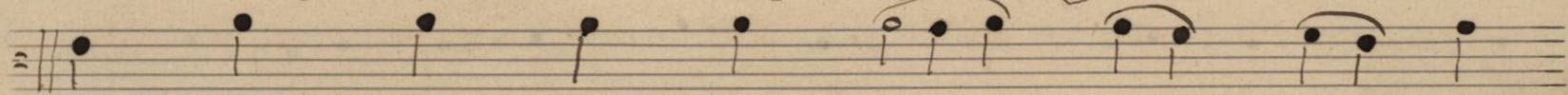
ქვედა... ლი... უფი... ჩნდა... ხუნი... სპა 5.



სა - - - - - და - ყოვლად - წმიდისა - - - - - სუ - - - - - ლი - - - - - სა - - - - - სა - - - - -



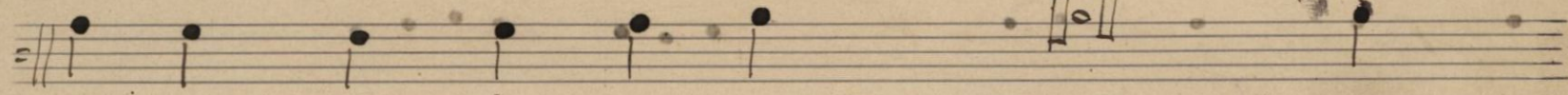
სა - - - - - ძე - - - - - ლი - - - - - ი - - - - - შუ - - - - - ჯა - - - - - რე - - - - - ლი - - - - - სა - - - - -



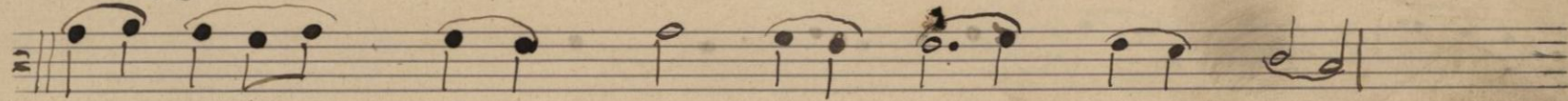
გან - - - - - ცხ - - - - - ვსუ - - - - - ბად - - - - - ხვენ - - - - - და - - - - - უ - - - - - გა - - - - - ლობ - - - - -



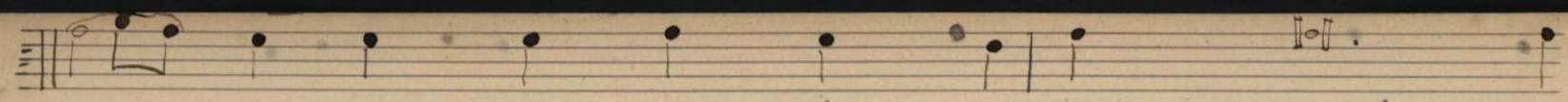
- ლეო - - - - - ძონ - - - - - წმუ - - - - - ნე - - - - - ნთ - - - - - და - - - - - თა - - - - - ყვა - - - - -



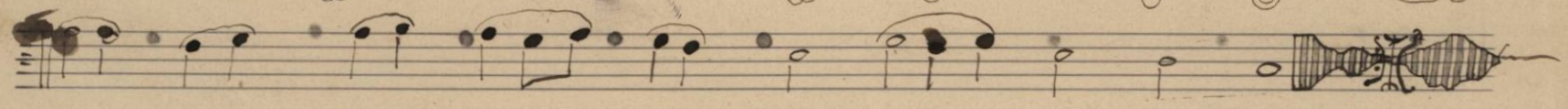
ნის - - - - - ვსე - - - - - ლო - - - - - ნა - - - - - ძე - - - - - თუ - - - - - სათნო - - - - - ინი - - - - - ნა - - - - - დ - - - - -



სლავ - - - - - ნ - - - - - ცი - - - - - თა - - - - - ყვან - - - - - სა - - - - - სუ - - - - - და - - - - -



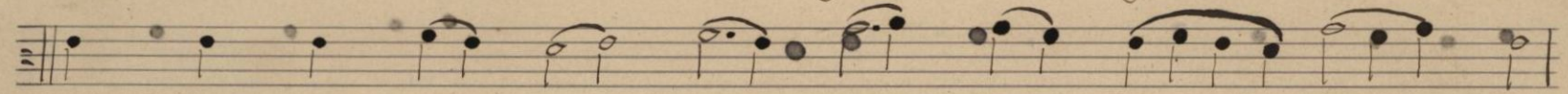
და..... სი..... უკლი..... ღი..... დასთ..... ხუენ..... ვა..... და..... ალაფინა..... უდაზნი..... დილით.....



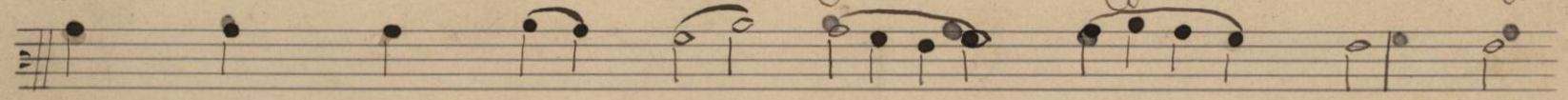
ლო..... თა..... მით..... ბუდ..... ვო..... მი..... თა..... თვი..... სი..... თა.....



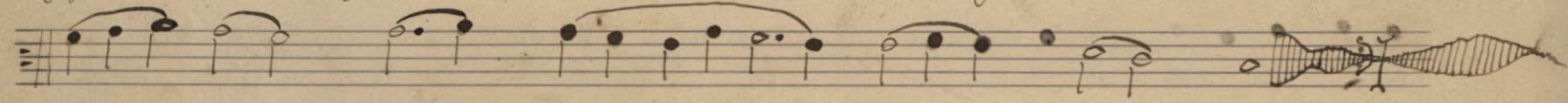
დძენ..... თი..... უ..... ფა..... ღი..... ლ..... ვა..... მთ..... ვვი..... ჩხდა..... ხუენ.....



დძენ..... თი..... უ..... ფა..... ღი..... ლ..... ვა..... მთ..... ვვი..... ჩხდა..... ხუენ.....

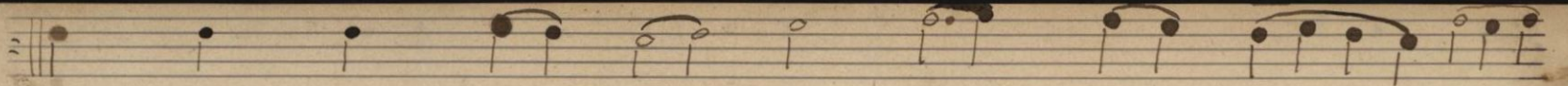


უჩი..... თვი..... ულა..... ახს..... მთ..... მა..... ვა..... ღი..... სა.....

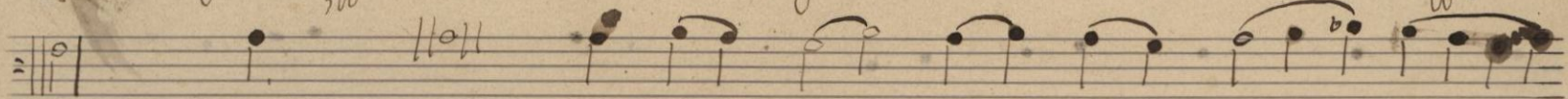


ბე..... ღი..... თა..... უ..... ფლოი..... სა..... თა.....

Handwritten text in Georgian script, likely a title or subtitle, written vertically on the left margin.

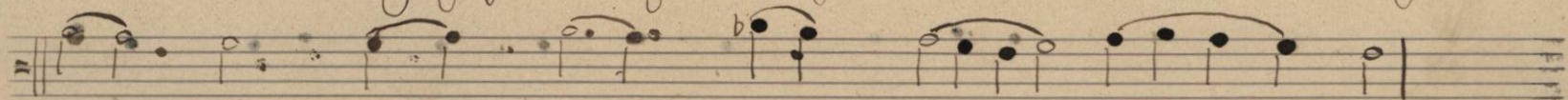


დაბ... სენ... შუა... ჩი... თა... შუ... ნი... თა... ნი... შუა...



აააა...

და... ვახუჯი... ა... ვა... ბა... სა... ნა... შათ... სე...

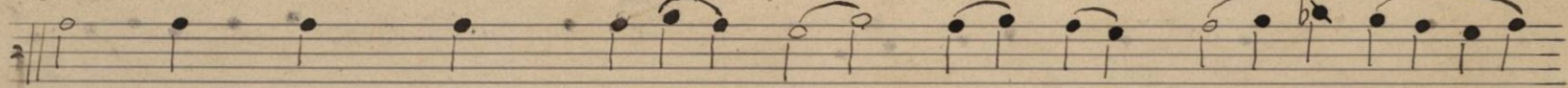


და... შუ... ნეკ... სა... სე... სე... თა... შათ.

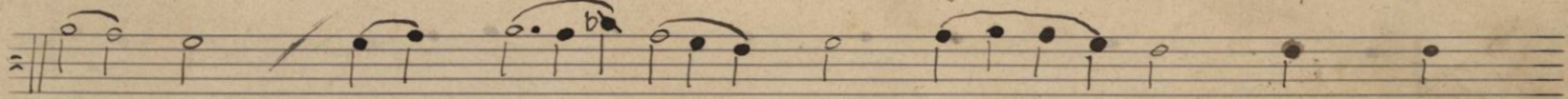


შუა...

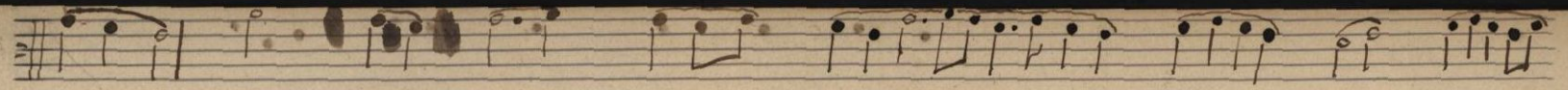
ვა... ვა... შუ... სე... რე... ნი... ნა... ჩუ... რა...



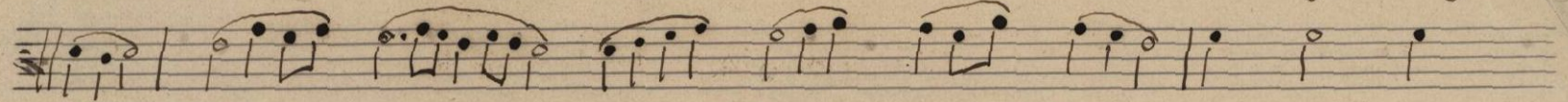
რ... შ... ცა... შუ... შათ... შათ... ნი... ნა... ჩუ... შა...



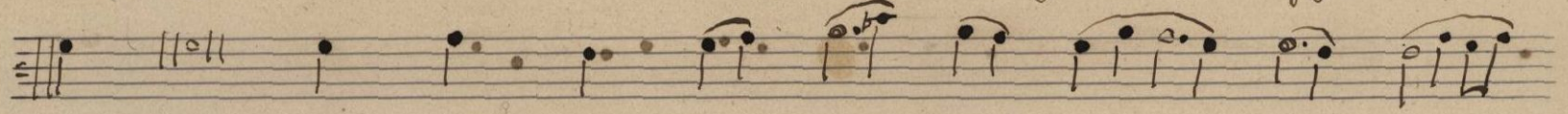
ვა... თა... შუ... ა... სე... უ... თა... რ... ჩ... შუ...



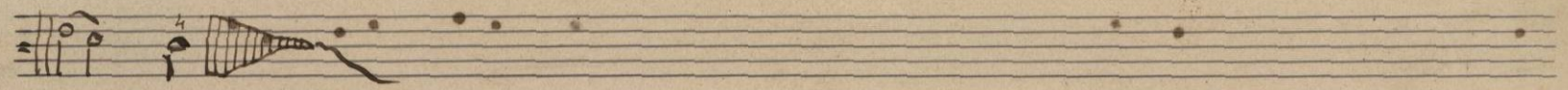
ფრუბ... ზა... აბ... ჩუბ... ბა... აბ... ვა... ლუ-



ფრუბ... ცა... ფა... აბ... ჩუბ... აბ... ცა... ზა... ზა... ბა...



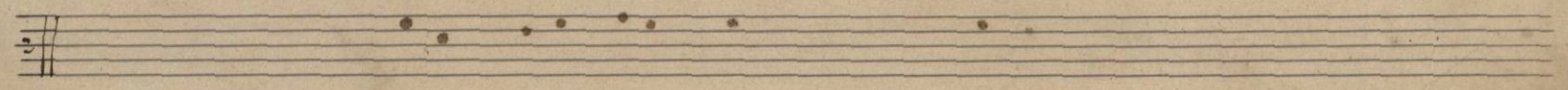
ა... ბ... ვა... ბა... ჩუბ... ბა... ვა... ვა... ვა... ზა...



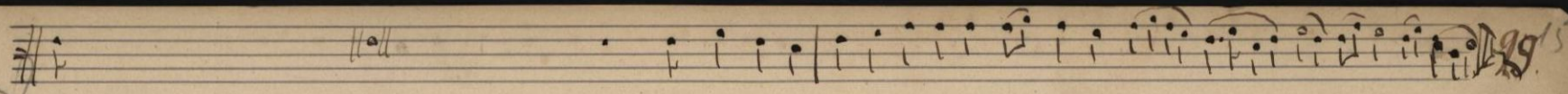
ბა... ბ.



ა... ვა... ვა... ბა... ბა... ჩუბ... ზა... აბ... ცა... ჩუბ... ბა... ზა...

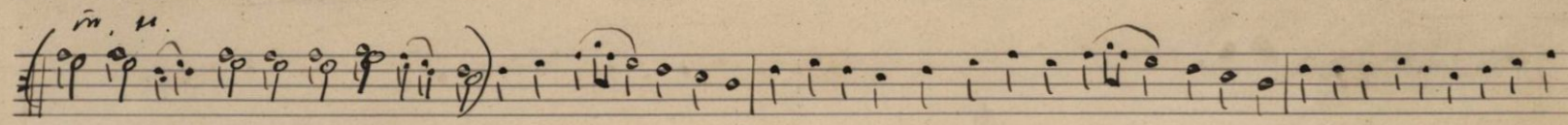


Воскресенье
1675. №18.

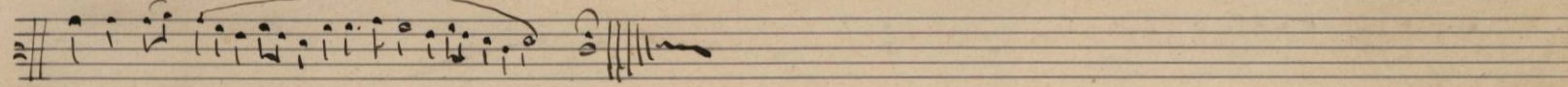


Handwritten text in a cursive script, likely a vocal line, with syllables written below the notes. The text includes words like "da da da" and "da da da".

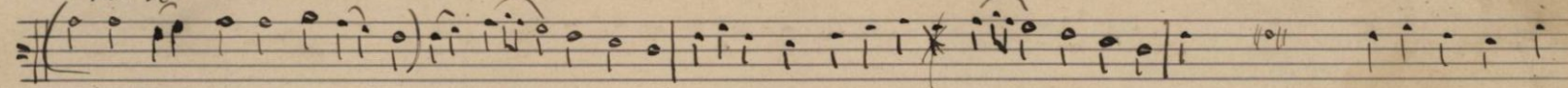
Barueria glynadecanua prazhurob.



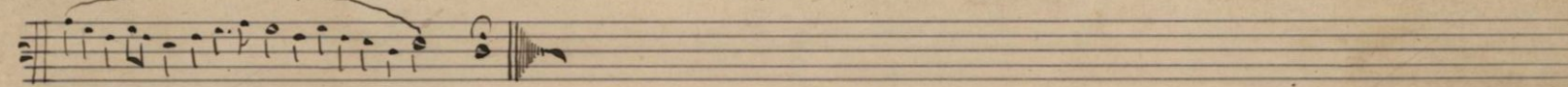
Handwritten text in a cursive script, likely a vocal line, with syllables written below the notes. The text includes words like "da da da" and "da da da".



Handwritten text in a cursive script, likely a vocal line, with syllables written below the notes. The text includes words like "da da da" and "da da da".



Handwritten text in a cursive script, likely a vocal line, with syllables written below the notes. The text includes words like "da da da" and "da da da".



Handwritten text in a cursive script, likely a vocal line, with syllables written below the notes. The text includes words like "da da da" and "da da da".

Handwritten text "665" at the bottom left of the page.

Handwritten text "happ." at the bottom center of the page.

Handwritten text "Barueria" on the left margin.

Handwritten text "Barueria" on the left margin.

30.

21 November

m.u.

zu der ersten Zeit der Welt die Erde war ein Chaos und die Götter schufen die Welt aus dem Chaos. Die Erde war ein Chaos und die Götter schufen die Welt aus dem Chaos.

Es ist

zu der ersten Zeit der Welt die Erde war ein Chaos und die Götter schufen die Welt aus dem Chaos. Die Erde war ein Chaos und die Götter schufen die Welt aus dem Chaos.

a

zu der ersten Zeit der Welt die Erde war ein Chaos und die Götter schufen die Welt aus dem Chaos. Die Erde war ein Chaos und die Götter schufen die Welt aus dem Chaos.

Es ist

25 November

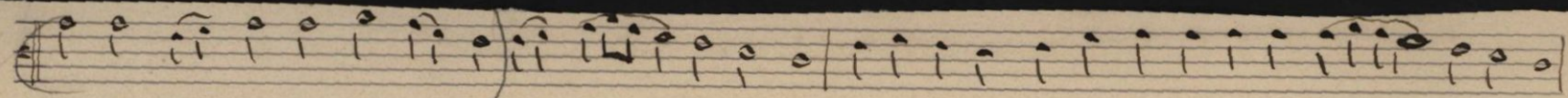
6. November

21

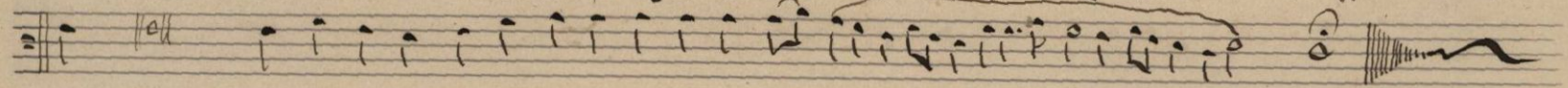
25

6. Nov

2. Gesehene

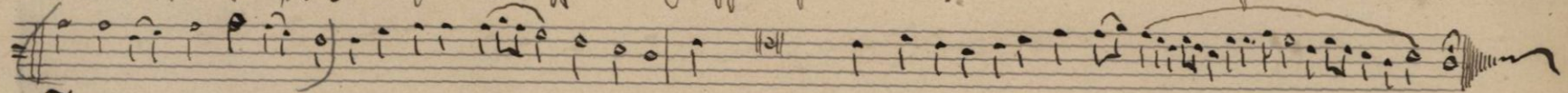


ga ga gubor of jubo ofu dab du dyu dy ga ga ofu lya ga do gubor gubor gubor fobog ba dab dy ba of ba

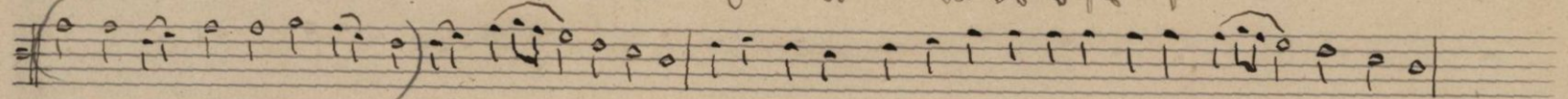


3. Gesehene

ba dhoru fubabofu lya ga ba ofu fob gubor ba da ga ofu ofu ofu

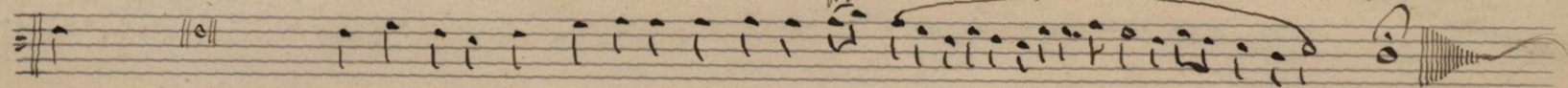


ofu ga ba ba ba ba ga ga gubor of fob ga ,, gubor of dab fob dy ga gubor of of



4. Gesehene

ga ga gubor of jubo ofu dab du dyu dy ga ga ofu lya ga do gubor gubor gubor fobog ba dab dy ba of ba



ba dhoru gubor fobog ofu da ofu ba lya dhoru ga ofu ba ofu ga ofu

Handwritten musical notation on a single staff, ending with the number 33. The notation includes various note values and rests.

Handwritten musical notation on a single staff, including a double bar line with repeat dots (||) and a fermata over the final note.

Handwritten musical notation on a single staff, featuring a complex melodic line with many beamed notes.

Handwritten musical notation on a single staff, showing a sequence of notes with stems pointing upwards.

Handwritten musical notation on a single staff, including a double bar line and a fermata over the final note.

Handwritten musical notation on a single staff, featuring a complex melodic line with many beamed notes.

Handwritten musical notation on a single staff, including a double bar line and a fermata over the final note.

Handwritten marginal note: *Handwritten text in the left margin.*

Handwritten marginal note: *Handwritten text in the left margin.*

აქ საბიბლიო დანთავსილია
В ЭТОМ ДЕЛЕ ПРОНУМЕРОВАННЫХ

საბიბლიო

(17)

შუბსვლი
ЛИСТОВ

3

ს

1977 წ. გ.

ბეჭდვა
подпись

გ. ჯ. მ. შ.

9-1961. 62f-154 (179)

အိတ်ကတ်ကတ် ၆၀၆၀ ဝန်ထမ်းစာရင်း ၂၅၆

၂၆/၆/၆၅ ၇၇၆

အိတ်ကတ် ကို ယူရန်

မ. ဝန်